

A PORTION OF THE NE 1/4, OF THE SW 1/4, OF SECTION 18, TOWNSHIP 24 N., RANGE 5 EAST, W.M., CITY OF MERCER ISLAND, WASHINGTON

**Table of Trees**  
8617 SE 44th St. Mercer Island, WA  
Arborist: Joseph S-H, Andrea S  
Date of Inventory: July 21, 2020  
Table Prepared: Oct 27, 2020

Tree ID	Scientific Name	Common Name	DSH (inches)	DSH Multistem	Health Condition	Structural Condition	N	E	S	W	Exceptional Threshold	Exceptional (Yes/No)	Exceptional Reason	Proposed Action	Limits of Disturbance*	Notes
401	<i>Pseudotsuga menziesii</i>	Douglas fir	37.4		Good	Good	31.1	29.6	28.1	29.6	30.0	Yes	Exceptional Size	Retain	12'-5" radius from face of trunk, 15'-5" preferable	Adjacent to driveway, utility box 3' from trunk, prominent surface roots, codominant at 40', one stem significantly smaller
402	<i>Thuja plicata</i>	Western Redcedar	26.0		Good	Good	14.1	14.1	14.1	14.1	30.0	Yes	Exceptional Size	Impact	11' radius from face of trunk	Typical drought stress canopy sparseness, ivy on stem, blackberry in drip-line, brush pile in root zone
403	<i>Thuja plicata</i>	Western Redcedar	12.8		Good	Good	8.5	8.5	8.5	8.5	30.0	Yes	Exceptional Size	Impact	10' radius from face of trunk	Brush pile in root zone, suppressed by larger adjacent Douglas-firs
404	<i>Pseudotsuga menziesii</i>	Douglas fir	26.5		Good	Good	19.1	19.1	19.1	19.1	30.0	Yes	Exceptional Size	Impact	15' radius from face of trunk	Wound 3'-6" with response, brush on north side
405	<i>Pseudotsuga menziesii</i>	Douglas fir	52.5		Good	Good	25.2	31.2	31.2	28.2	30.0	Yes	Exceptional Size	Impact	18' radius from face of trunk on east side, 21' radius in all other directions	Concrete pad from shed 14' from trunk, left attached to trunk at 15', cut removed electrical line on east side, crown raised in past, 3. retained scaffold with narrow attachment angles, could prove to subordinate
406	<i>Arbutus menziesii</i>	Madrone	16.7	15.1, 7.2	Good	Good	13.2	12.7	18.7	20.7	6.0	No	Exceptional Size	Remove	N/A	Shaded tree, phototropic to southwest, limbs at base
407	<i>Cotoneaster dentata</i>	American chestnut	9.9		Good	Good	17.4	13.4	15.4	15.9		No	Exceptional Size	Impact	10' radius from face of trunk	Crotch cut tree, not on survey, stub cuts on trunk
408	<i>Malus sp.</i>	Apple	17.0	13.3, 10.6	Good	Fair	16.7	16.7	16.7	16.7	20.0	No	Exceptional Size	Remove	N/A	3" diameter stub cuts, 7' from fence
409	<i>Pinus jeffreyi</i>	Jeffrey pine	29.7		Good	Good	18.2	11.2	25.2	16.2	-	No	Exceptional Size	Remove	N/A	Climax of 3 needles 5' long, ivy on trunk, 7.5' from fence to south, needle disease causing premature w/drop, tree health is good overall
410	<i>Pseudotsuga menziesii</i>	Douglas fir	15.5		Good	Fair	13.6	16.6	12.6	19.6	30.0	Yes	Exceptional Size	Impact	8' radius from face of trunk	Codominant stems at 12', one stem is juvenile & subordinate, trunk is 6' from fence, brush in root zone
411	<i>Pseudotsuga menziesii</i>	Douglas fir	34.3		Good	Good	24.4	24.4	24.4	24.4	30.0	Yes	Exceptional Size	Impact	11' from face of trunk, 14' is preferable	Codominant stems on north side of trunk, unusual trunk anatomy as well
412	<i>Pseudotsuga menziesii</i>	Douglas fir	11.8		Good	Fair	3.5	12.0	11.5	7.5	30.0	Yes	Exceptional Size	Retain	Tree drip-line	Utility line in contact with stems, most of live canopy to southeast, codominant stems with narrow union, third stem was removed in past
413	<i>Pseudotsuga menziesii</i>	Douglas fir	8.1		Good	Fair	1.3	10.3	10.3	8.8	30.0	No	Under 10" diameter	Retain	Tree drip-line	Taproot for wire clearance, 1. retained trunk, most of live canopy to southeast
414	<i>Pseudotsuga menziesii</i>	Douglas fir	17.1		Good	Fair	10.7	15.7	22.7	12.7	30.0	Yes	Exceptional Size	Retain	Tree drip-line	Broken top with restoration at 45', ivy at base
415	<i>Pseudotsuga menziesii</i>	Douglas fir	24.7		Good	Good	18.0	18.0	21.0	25.0	30.0	Yes	Exceptional Size	Retain	Tree drip-line	Epicormic release, growing 2' from driveway, ivy at base, lost top possibly due to storm damage
416	<i>Pseudotsuga menziesii</i>	Douglas fir	12.7		Good	Fair	12.0	17.0	13.5	16.0	30.0	Yes	Exceptional Size	Retain	Tree drip-line	Previously topped, ivy at base
417	<i>Pseudotsuga menziesii</i>	Douglas fir	12.1		Good	Good	9.5	10.5	10.0	10.0	30.0	Yes	Exceptional Size	Impact	11' radius from face of trunk	Ivy at base, recent soil disturbance in drip-line

Tree Solutions, Inc. 2940 Westlake Ave. N #200 Seattle, WA 98109  
Page 1 of 3  
www.treesolutions.net 206-528-4670

**Table of Trees**  
8617 SE 44th St. Mercer Island, WA  
Arborist: Joseph S-H, Andrea S  
Date of Inventory: July 21, 2020  
Table Prepared: Oct 27, 2020

Tree ID	Scientific Name	Common Name	DSH (inches)	DSH Multistem	Health Condition	Structural Condition	N	E	S	W	Exceptional Threshold	Exceptional (Yes/No)	Exceptional Reason	Proposed Action	Limits of Disturbance*	Notes
418	<i>Pseudotsuga menziesii</i>	Douglas fir	27.2		Good	Good	23.6	23.1	27.6	21.1	30.0	Yes	Exceptional Size	Impact	N/A	Large limb in trunk at 55', likely from lost or removed top
419	<i>Arbutus menziesii</i>	Madrone	17.2		Good	Good	35.7	15.2	3.7	13.7	6.0	Yes	Exceptional Size	Impact	12' radius from face of trunk to south only	Some dieback in lower stem and stems overhanging road, as is typical for madrones in urban environments, large climbing rose on trunk up to 10', phototropic to north over road, cankers on trunk
420	<i>Pseudotsuga menziesii</i>	Douglas fir	19.3		Good	Fair	14.3	17.3	15.3	14.3	30.0	Yes	Exceptional Size	Remove	N/A	Pitch flow from trunk, previously lost top, but on trunk at 5', pile of deadwood above base of tree
421	<i>Pseudotsuga menziesii</i>	Douglas fir	23.5		Good	Good	18.0	14.5	26.0	19.0	30.0	Yes	Exceptional Size	Retain	Tree drip-line	Driveway abuts base of tree
422	<i>Pseudotsuga menziesii</i>	Douglas fir	22.2		Good	Fair	12.4	14.9	14.4	15.9	30.0	Yes	Exceptional Size	Retain	Tree drip-line	Driveway abuts base of tree, twisting top possibly from past damage to stem
423	<i>Pseudotsuga menziesii</i>	Douglas fir	28.5		Good	Good	28.7	23.7	15.2	16.2	30.0	Yes	Exceptional Size	Retain	Tree drip-line	Driveway abuts base of tree, low live crown canopy, sparse canopy
424	<i>Pseudotsuga menziesii</i>	Douglas fir	18.2		Good	Good	9.8	13.8	16.8	36.8	30.0	Yes	Exceptional Size	Remove	N/A	Axial stem leans strongly to west creating an unusual form, driveway abuts base of tree
425	<i>Pseudotsuga menziesii</i>	Douglas fir	25.3		Good	Good	23.1	16.1	16.1	22.1	30.0	Yes	Exceptional Size	Remove	N/A	Driveway abuts base of tree, low live crown ratio
426	<i>Acer macrophyllum</i>	Bigleaf Maple	14.8		Good	Good	10.6	17.1	20.6	23.6	30.0	No	Exceptional Size	Impact	4' radius from trunk on east side only, limit grade cuts within drip-line	Surface roots impacted by driveway, arborist monitoring recommended for road improvements near trunk
427	<i>Acer macrophyllum</i>	Bigleaf Maple	11.7		Good	Good	15.5	11.5	16.0	17.5	30.0	No	Exceptional Size	Remove	N/A	base of tree directly abuts driveway to east
428	<i>Pseudotsuga menziesii</i>	Douglas fir	32.7		Good	Fair	31.9	28.9	19.4	19.4	30.0	No	Exceptional Size	Impact	no grade cuts within 8' of trunk to east	Gravel driveway to east, road to north, lot top 40' with intersections, road 13.5' from trunk

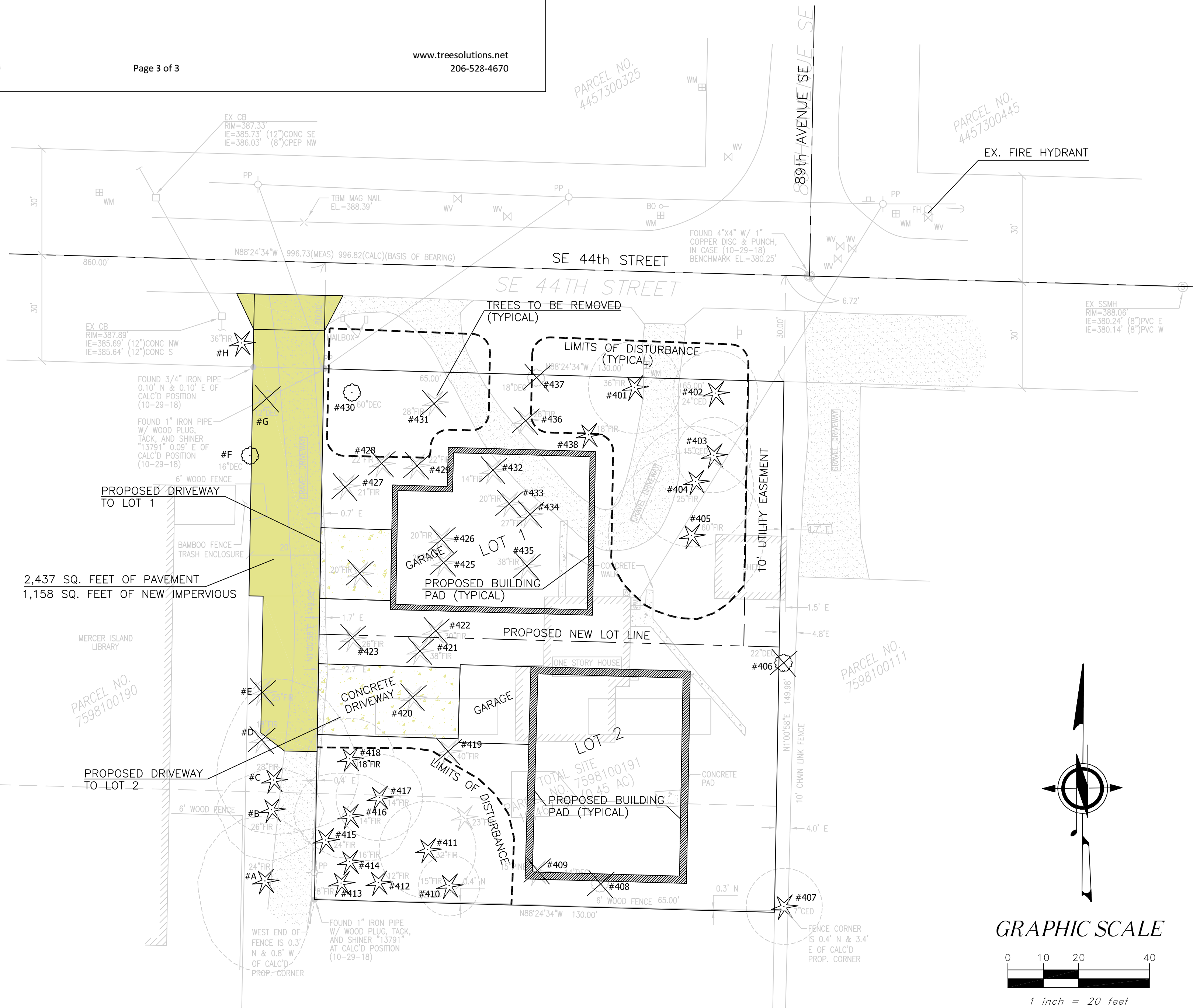
\* Limits of disturbance are measured radially from the face of the trunk.  
Notes  
> Tree drip-line is preferred limits of disturbance for all trees  
> If limits of disturbance within the drip-line are allowed on a specific side only, the limits of disturbance on all other sides is the tree drip-line or greater.  
> Saving within limits of disturbance may be feasible if no grade cuts are made  
> any work occurring within limits of disturbance shall be monitored by a qualified ISA Certified Arborist.  
> contact project arborist if excavation requires removal of any roots greater than 3" diameter within tree drip-lines

Tree Solutions, Inc. 2940 Westlake Ave. N #200 Seattle, WA 98109  
Page 3 of 3  
www.treesolutions.net 206-528-4670

**Table of Trees**  
8617 SE 44th St. Mercer Island, WA  
Arborist: Joseph S-H, Andrea S  
Date of Inventory: July 21, 2020  
Table Prepared: Oct 27, 2020

Tree ID	Scientific Name	Common Name	DSH (inches)	DSH Multistem	Health Condition	Structural Condition	N	E	S	W	Exceptional Threshold	Exceptional (Yes/No)	Exceptional Reason	Proposed Action	Limits of Disturbance*	Notes
429	<i>Pseudotsuga menziesii</i>	Douglas fir	17.6		Good	Good	13.7	18.7	11.2	15.7	30.0	Yes	Exceptional Size	Remove	N/A	8' from trunk to north, 11' to east, 11' to west
430	<i>Pseudotsuga menziesii</i>	Douglas fir	35.1		Good	Good	22.0	23.0	18.0	18.0	30.0	Yes	Exceptional Size	Remove	N/A	Existing house 15' from trunk to east, brush and soil disturbance in drip-line, on west side
431	<i>Pseudotsuga menziesii</i>	Douglas fir	19.7		Good	Good	13.8	7.8	13.8	13.8	30.0	No	Exceptional Size	Remove	N/A	Dead ivy up to 65', has been removed at base but canopy is started from this
432	<i>Pseudotsuga menziesii</i>	Douglas fir	31.0		Good	Good	22.8	24.3	23.3	23.3	30.0	Yes	Exceptional Size	Remove	N/A	Dead ivy in tree, ivy at base, epicormic release on lower trunk, compaction in root zone to west
433	<i>Pseudotsuga menziesii</i>	Douglas fir	21.6		Good	Fair	15.9	18.9	11.9	17.4	30.0	Yes	Exceptional Size	Remove	N/A	Knock in trunk at 4' previously lost top higher up on the stem
434	<i>Pseudotsuga menziesii</i>	Douglas fir	25.1		Good	Good	20.5	17.0	17.0	21.5	30.0	Yes	Exceptional Size	Remove	N/A	Abuts driveway on west side, compaction in root zone
435	<i>Pseudotsuga menziesii</i>	Douglas fir	20.4		Good	Fair	21.4	9.9	11.4	22.4	30.0	Yes	Exceptional Size	Remove	N/A	Lost top with multiple small infestations, driveway 4' from base
436	<i>Pseudotsuga menziesii</i>	Douglas fir	24.9		Good	Good	16.0	16.0	23.0	23.0	30.0	Yes	Exceptional Size	Remove	N/A	Dead ivy on trunk
437	<i>Pseudotsuga menziesii</i>	Douglas fir	14.6		Good	Good	16.6	15.1	13.6	18.6	30.0	Yes	Exceptional Size	Remove	N/A	Knock in trunk at 25', perhaps from losing its top in the past
438	<i>Pseudotsuga menziesii</i>	Douglas fir	21.1		Good	Good	19.9	7.9	18.9	17.4	30.0	Yes	Exceptional Size	Remove	N/A	Asymmetric canopy, driveway abuts trunk to west approx 4' from trunk
439	<i>Pseudotsuga menziesii</i>	Douglas fir	22.5		Good	Fair	14.9	12.9	20.9	20.9	30.0	Yes	Exceptional Size	Remove	N/A	Knock in trunk at 40'
440	<i>Pseudotsuga menziesii</i>	Douglas fir	21.7		Good	Good	15.9	12.9	14.9	11.9	30.0	Yes	Exceptional Size	Remove	N/A	Dead ivy on trunk, limb in trunk at 50'
441	<i>Acer macrophyllum</i>	Bigleaf Maple	34.7		Good	Fair	38.4	12.4	23.4	26.4	30.0	Yes	Exceptional Size	Impact	15' from trunk to southeast only for building foundation	Cavities with decay in trunk, large cavity at base with wound up to 6', wound makes an L shape and is 3' x 4' on the north side, decay at base, perhaps caused by large trunk failure many years ago, termites in canopy, canopy color looks good, good leaf size
442	<i>Pseudotsuga menziesii</i>	Douglas fir	26.3		Good	Fair	23.1	14.6	1.1	16.1	30.0	Yes	Exceptional Size	Remove	N/A	Pin cox on trunk, dead branches in crown with saprophytic fungi, lost top many years ago, recommend advanced aerial assessment if tree is retained
443	<i>Pseudotsuga menziesii</i>	Douglas fir	12.1		Good	Fair	16.5	8.5	10.0	10.5	30.0	Yes	Exceptional Size	Remove	N/A	Large canker on stem at 45', growing 3' from old driveway, good candidate for removal
444	<i>Pseudotsuga menziesii</i>	Douglas fir	17.5		Good	Good	15.7	8.2	8.2	8.7	30.0	Yes	Exceptional Size	Remove	N/A	Ivy on stem to 27'
445	<i>Pseudotsuga menziesii</i>	Douglas fir	26.6		Good	Good	17.6	20.6	20.1	17.1	30.0	Yes	Exceptional Size	Remove	N/A	Ivy on stem to 15'
446	<i>Pseudotsuga menziesii</i>	Douglas fir	39.0		Good	Good	21.1	30.1	28.6	24.1	30.0	Yes	Exceptional Size	Remove	N/A	House foundation 10' to southeast of trunk, 6' limb tree on southeast side of trunk, crown raised, first branches at 40' above ground

Tree Solutions, Inc. 2940 Westlake Ave. N #200 Seattle, WA 98109  
Page 2 of 3  
www.treesolutions.net 206-528-4670



REV. NO.	DATE	DESCRIPTION
1	12/16/2020	RESPOND TO CITY COMMENTS DATED 12/04/2020

**OFF ENGINEERS**  
13923 SOUTHEAST 189TH PLACE  
RENTON, WASHINGTON 98058  
PHONE: 425-290-3412  
CONTACT: DARRELL OFFE, P.E.

CHECKED BY: DLO  
DRAWN BY: VS  
DESIGNED BY: DLO

**Constantine Short Plat**  
**George Constantine**  
**TREE PLAN**

PROJECT: \_\_\_\_\_  
CLIENT: \_\_\_\_\_  
SHEET CONTENT: \_\_\_\_\_

DATE: 12/16/2020  
JOB NO.: \_\_\_\_\_  
DWG NO.: \_\_\_\_\_

SHEET 6 OF 7

FILE#: SUB20-004